

**Do the
railway
the right
way**

The logo features a solid green circle with a white horizontal rectangle centered over its middle. The word "SOUTHERN" is printed in black, all-caps, serif font within the white rectangle.

SOUTHERN

A solid green circle is centered behind the word "SOUTHERN".

SOUTHERN

Welcome!

This little guide is here to make every journey smoother, friendlier and more enjoyable for everyone. Inside, you'll find six simple train etiquette points that help keep our journeys running smoothly, from keeping your feet off the seats to remembering your earphones.

This year we're celebrating Railway 200, which marks the milestone 200th anniversary of the modern railway. It's a chance to look back at how far train travel has come, and to appreciate the journeys that connect us today.

We've also teamed up with three fantastic heritage attractions you can easily reach with Southern: Bluebell Railway, Brighton Toy Museum, and Amberley Museum. Each one celebrates the wonder of travel and local history in its own special way, and you'll find a page on each inside.

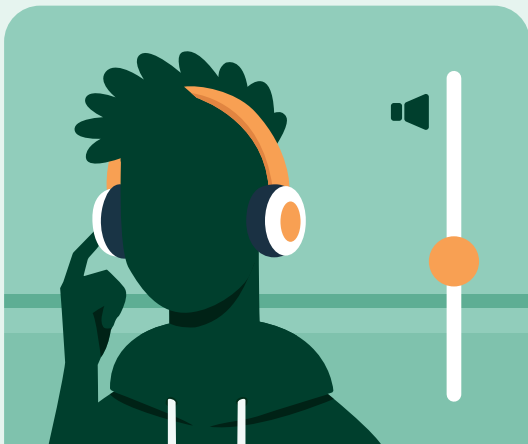
At the back, you'll find a stamp page. Visit each attraction, collect all three stamps, and you'll earn a special piece of merchandise as a thank you for travelling with us and helping to create great journeys for a sustainable future.



**Thank you for
keeping your feet
off the seats**



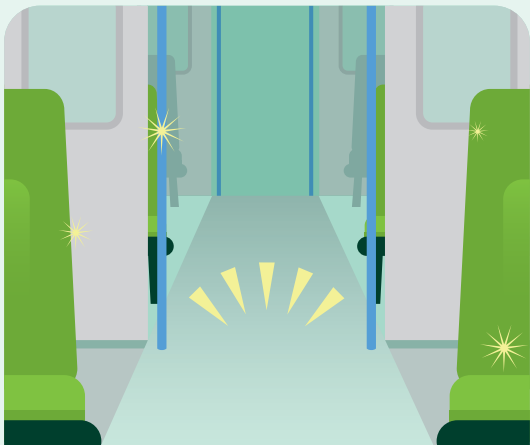
**Thank you for
keeping the seat
next to you free
for someone
who needs it**



**Thank you for
keeping the volume
down, and using
earphones**



**Thank you for
keeping your
conversations
to yourselves**



**Thank you for
keeping doors
and aisles clear**



**Thank you for
keeping it tidy
and putting
rubbish in bins**



Bluebell Railway

Discover Bluebell Railway, where heritage steam and diesel trains run through the beautiful Sussex countryside. Catch a Southern train to East Grinstead, where the heritage station is less than a 5-minute walk away.

As soon as you step through the gates, you'll be transported back in time and ready to start your adventure. You can hop off at charming stops along the way, including Kingscote, Horsted Keynes, and Sheffield Park. The lovingly restored locomotives and carriages are run by volunteers who keep railway history alive.

Don't forget to ask for your stamp when you visit - it's your ticket towards our special merchandise reward.



Brighton Toy Museum

Tucked away beneath Brighton Station, Brighton Toy Museum is a treasure trove of childhood wonder. Step through its doors and you'll discover over 10,000 vintage toys, models and railway sets, from classic Dinky cars to beautiful 1950s slot machines.

The museum captures the magic of toys across generations, with intricate model train layouts that delight adults just as much as children. You can even spot rare pieces from famous British toymakers, displayed with care and storytelling charm.

It's the perfect stop for families, collectors or anyone who loves a touch of nostalgia. Remember to collect your stamp before you go!



Amberley Museum

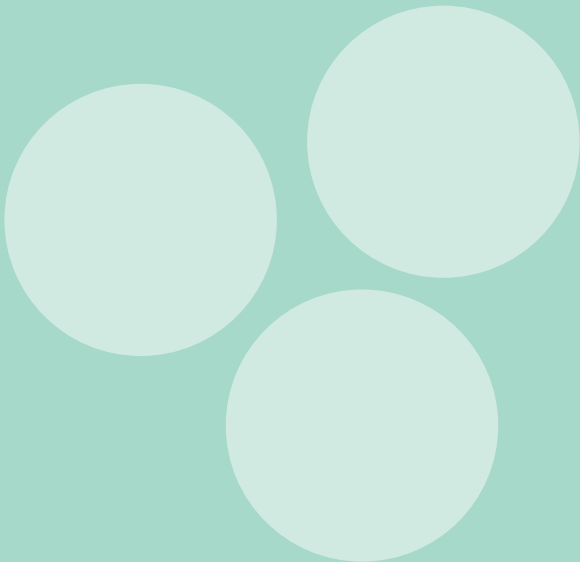
This isn't your average museum. You can explore 36 acres of fascinating exhibitions, ride a narrow-gauge railway, and see history brought to life.

It's a place where curiosity thrives, and a wonderful reminder of how travel, industry and craftsmanship have shaped our region. It couldn't be easier to get to, as the entrance is right opposite Amberley railway station.

Pick up your stamp during your visit and keep your guide safe - you're one step closer to your merchandise!

This is your stamp station!

How to collect your stamps: travel to each attraction listed in this guide with Southern Railway. Present your train ticket and this guide to a member of staff, who will gladly stamp this page for you.



Thank you for joining us on this journey

By following a few simple points of train etiquette, you're helping to make every trip more pleasant for everyone who travels with us - including you!

We hope you've enjoyed discovering our partner attractions, too.

Don't forget to collect your stamps along the way. Once you've got all three, you can claim your exclusive merchandise by filling in the claim form on our website at **southernrailway.com/travel-inspiration/do-the-railway-the-right-way** where you'll also find the full Terms and Conditions of this promotion.

Here's to smoother journeys, happier passengers, and doing the railway the right way.

Every stop is a story.



SOUTHERN